



# Le Corbusier

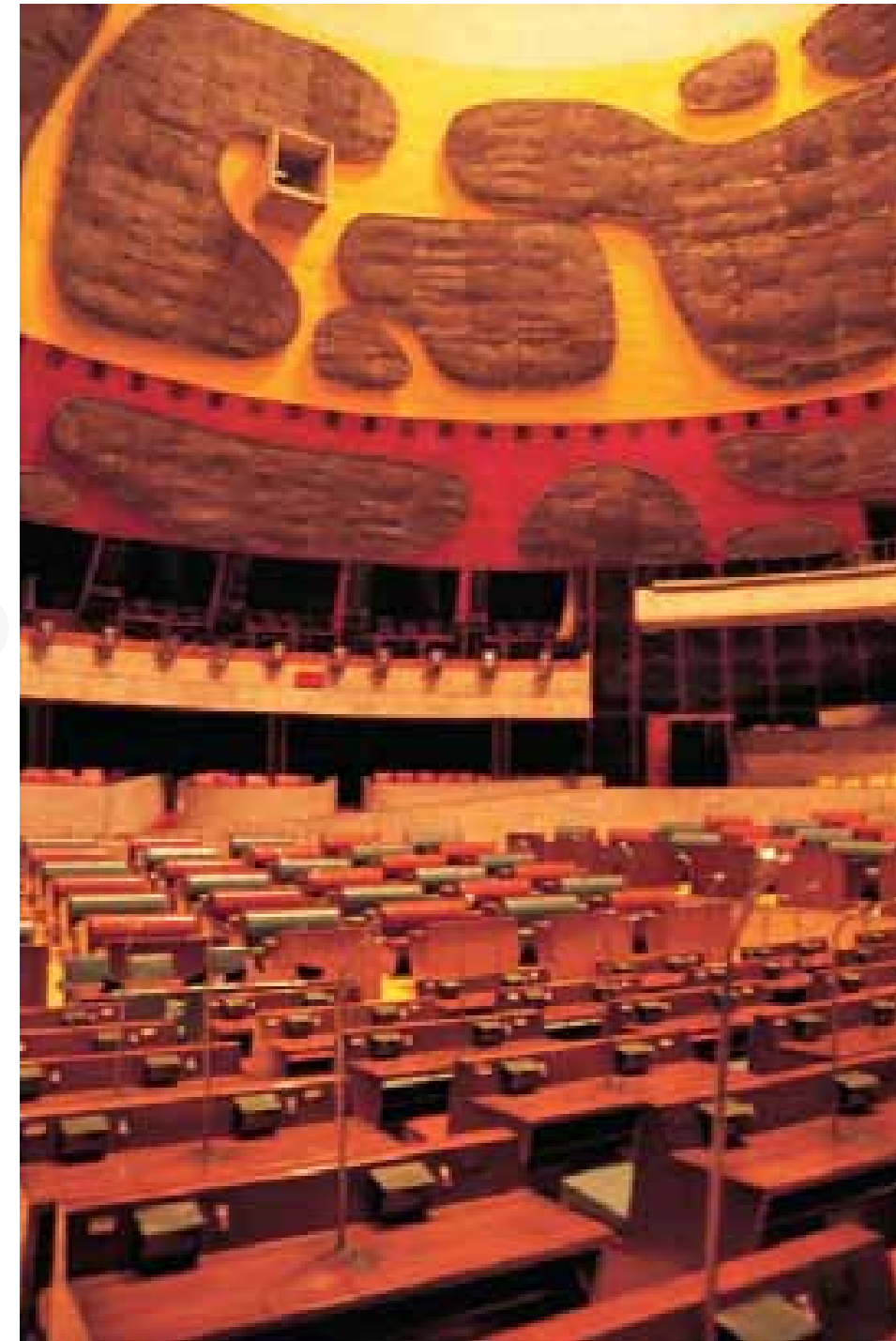
## Chandigarh and the Modern City

*Insights into the Iconic City Sixty Years Later*

Mapin Publishing

Edited by Hasan-Uddin Khan  
with Julian Beinart and Charles Correa

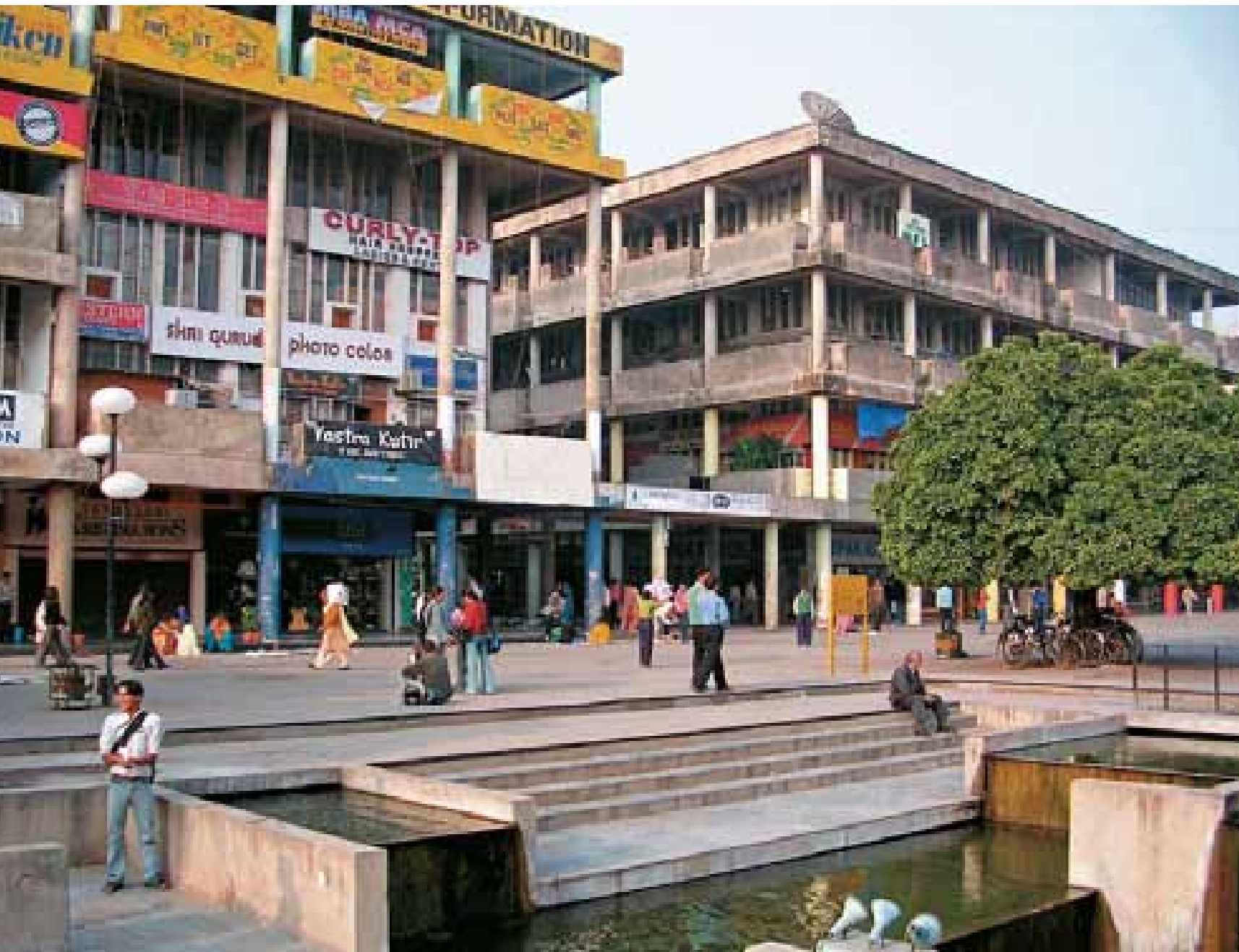
Mapin Publishing



*Facing page, above*  
I.1 The iconic Capitol Complex in the early 21st century—the Assembly and Secretariat.

*Facing page, below*  
I.2 The Capitol Complex from the Secretariat roof: the Assembly building with its distinctive reactor cooling tower crown—a reference to ancient cosmology and modern industrial India—the High Court and plaza, and the hills in the distance.

I.3 Interior of the main council chamber of the Assembly building by Le Corbusier—currently used by the Punjab Government. (A second smaller hall is used by the Government of Haryana.)



| I.4 Sector 17 plaza with shops and offices designed by Le Corbusier—the main commercial area of the city.



| I.5 The facade of the Secretariat building (1951–58) by Le Corbusier has a brilliant rhythmic variation in the placement of the vertical supports as well as the location of horizontal sun-breakers and the parapets.